

# CERTIFICATE OF LOCATION OF GOVERNMENT CORNER

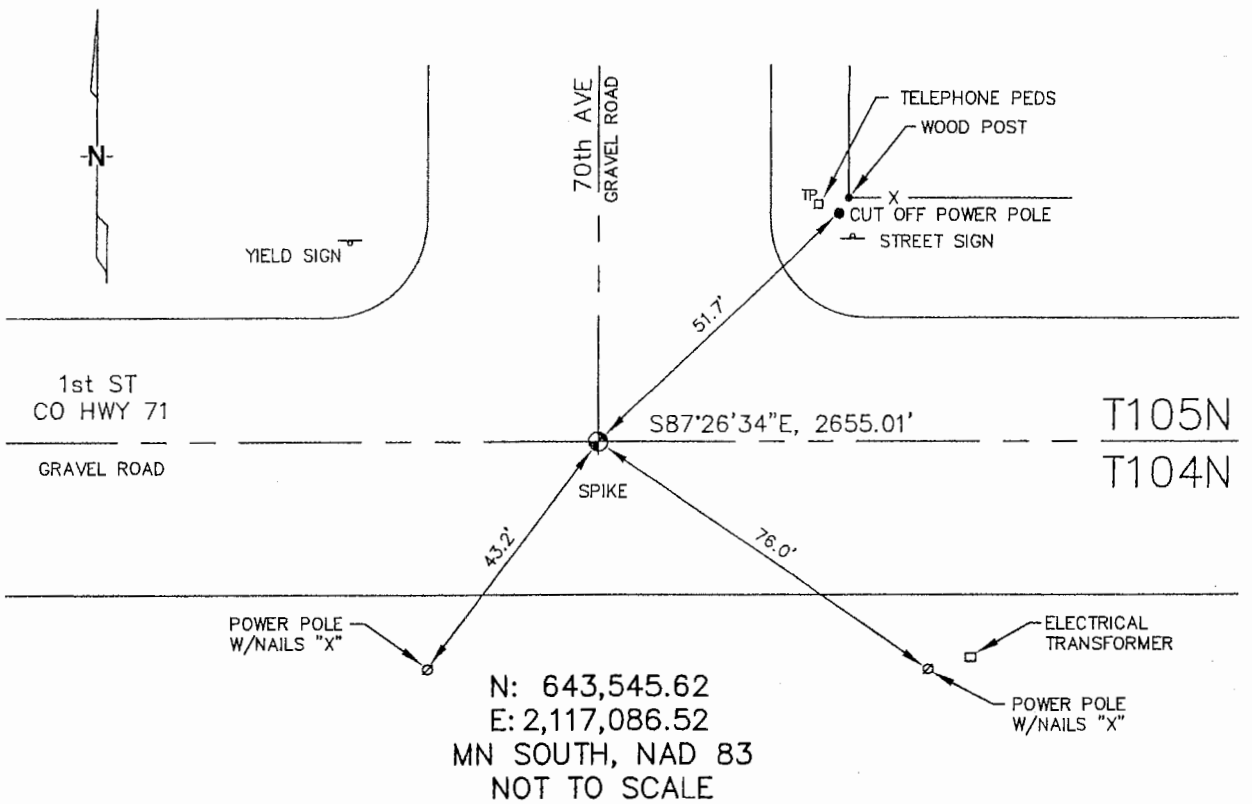
SOUTHWEST Corner of Section 32, Township 105, Range 42, 5TH P.M.

STATE OF MINNESOTA, County of MURRAY

At the corner location shown on the sketch :

- On 1/13/2006 found A SPIKE AT THE INTERSECTION OF GRAVEL  
ROADS.
- left monument as found,  lowered monument,  removed monument (explain)
- On \_\_\_\_\_ set \_\_\_\_\_

### Sketch of reference ties



Statement of evidence relative to this corner location is on back page

I hereby certify that this document and the data contained herein was prepared by me or under my direct supervision.

Thomas V. Zeff 7/05/06  
 Thomas V. Zeff Date

Registration No. 44563

- Land Surveyor,  Professional Engineer  
 County Surveyor,  County Engineer

### OFFICE OF THE COUNTY RECORDER

County of \_\_\_\_\_

**SEP 28 2006**

I hereby certify that this document was filed in the Co. Recorders office at \_\_\_\_\_ .M. on the day of \_\_\_\_\_ A.D. , 20

County Recorder James V. Johnson  
 By \_\_\_\_\_, Deputy

DOCUMENT NO. \_\_\_\_\_

STATEMENT OF EVIDENCE:

SOUTHWEST CORNER, SECTION 32, T. 105 N., R. 42 W.,  
MURRAY COUNTY, MINNESOTA

- 1858 W.J. Niely, US. Deputy Surveyor, monumented south township line.
- 1/13/2006 Ulteig Engineers, Inc., Survey Crew, Brian Payne Party Chief,  
found a spike at the intersection of 1st Street & 70th Avenue.  
Ties: E-2655.01' to S 1/4 corner, Section 32;  
NE-51.7 to cut-off power pole;  
SE-76.0' to nailed "X" on power pole;  
SW-43.2' to nailed "X" on power pole.